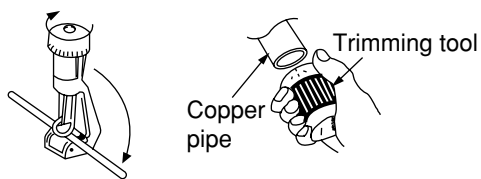
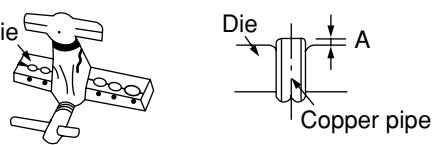


4. Preparation of Pipe

- Use a pipe cutter to cut the copper pipe.



- Before flaring, please put on the flare nut.



- Please use exclusive tool

Outer Diameter (Ø)	A (mm)	
	Imperial flaring tool	Rigid flaring tool
6.35 (1/4")	0 ~ 0.5mm	1.0mm
9.52 (3/8")	0 ~ 0.5mm	1.0mm
12.7 (1/2")	0 ~ 0.5mm	1.0mm

5. Pipe Connection

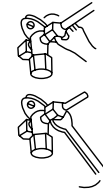
5.1 Pipe connection

Connecting the pipe to outdoor unit

- Remove the flare nut and seal cap from the service valve.
- Apply refrigerator oil to the service valve and the flared portion of the pipe.
- Using a wrench, security tighten.

Tighten all the way by hand.

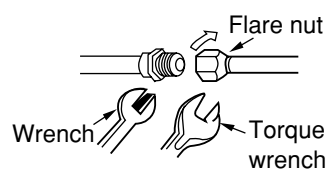
Do not tighten all at once, but tighten it while fitting the flared surface to the pipe.



CAUTION

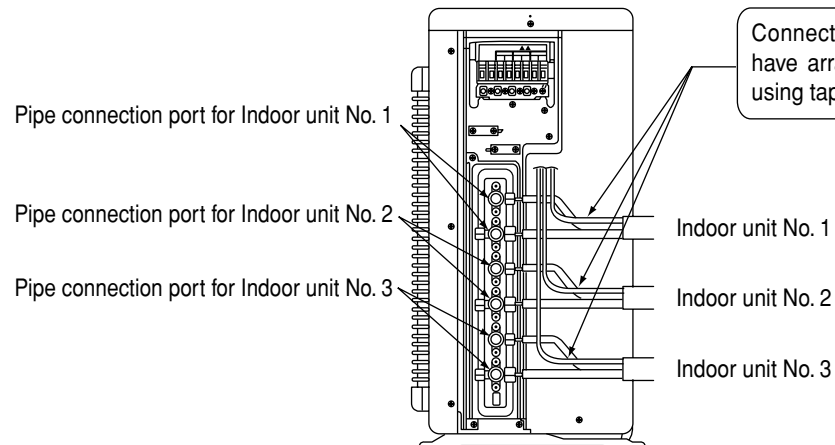
- In case of removing flare nut of a indoor unit, first remove a nut of small diameter side, or seal cap of large diameter side will fly out. Free from water into the piping when working.
- During connection, keep away from water.
- Be sure to tighten the flare nut to the specified torque using a torque wrench. If the flare nut is tightened excessively, it may crack as time elapses, causing refrigerant leakage.

- Please be careful when bending the copper pipe.
- Screw in manually while adjusting the center. After that, use of torque wrench to tighten the connection.



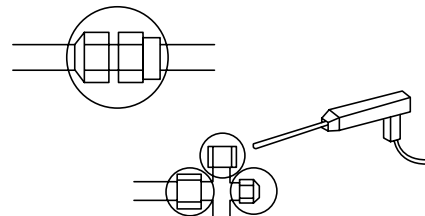
	Outer diameter of pipe (Ø)	Torque N·m (kgf·cm)
Small diameter side	6.35 (1/4")	13.7-18.6 (140-190)
	9.52 (3/8")	34.3-44.1 (350-450)
	12.7 (1/2")	44.1-53.9 (450-550)
Large diameter side	6.35 (1/4")	19.6-24.5 (200-250)
	9.52 (3/8")	19.6-24.5 (200-250)
	12.7 (1/2")	29.4-34.3 (300-350)
Valve head cap		
Valve core cap		12.3-15.7 (125-160)

- Install the unit in a stable place to minimize vibration or noise.
- After arranging the cords and pipes, secure them in place.



Gas leakage inspection

Please use gas leakage detector to check if leakage occurs at connection of flare nut as shown on the right. If gas leakage occurs, further tighten the connection to stop leakage. (Use the detector provided for R410A)



COOL/HEAT CAPACITY SPEC, FOR INDOOR UNITS COMBINATIONS

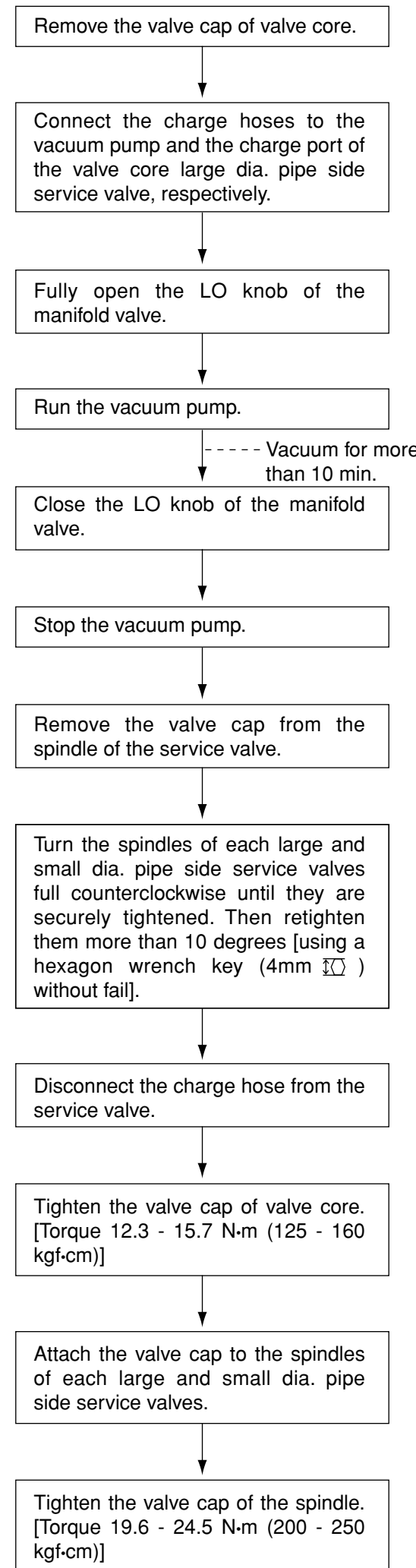
(Reference value)

POSSIBLE COMBINATIONS TO OPERATE	COOLING				HEATING		
	CAPACITY RATING (kW) (RANGE)	OUTDOOR UNIT		CAPACITY RATING (kW) (RANGE)	OUTDOOR UNIT		
		POWER CONSUMPTION (W)	AMPERE (A) 220-240V		POWER CONSUMPTION (W)	AMPERE (A) 220-240V	
ONE UNIT	1.8	1.80 (1.00 - 2.50)	560 (200 - 750)	2.6 - 2.4	2.50 (1.10 - 3.20)	750 (200 - 1050)	3.4 - 3.2
	2.5	2.50 (1.00 - 2.80)	780 (200 - 980)	3.6 - 3.3	3.90 (1.10 - 4.70)	1145 (200 - 1380)	5.3 - 4.8
	3.5	3.50 (1.00 - 3.90)	1160 (200 - 1280)	5.3 - 4.9	4.80 (1.10 - 5.80)	1550 (200 - 1870)	7.1 - 6.5
	5.0	5.00 (1.00 - 5.60)	1780 (200 - 1960)	8.2 - 7.5	6.50 (1.10 - 7.20)	2400 (200 - 2660)	11.0 - 10.1
TWO UNITS	1.8 + 1.8	1.80 + 1.80 (1.50 - 4.00)	1190 (200 - 1300)	5.5 - 5.0	2.50 + 2.50 (1.50 - 5.20)	1460 (200 - 1550)	6.7 - 6.1
	1.8 + 2.5	1.80 + 2.40 (1.50 - 4.60)	1310 (200 - 1450)	6.0 - 5.5	2.40 + 3.80 (1.50 - 6.30)	1820 (200 - 1920)	8.4 - 7.7
	1.8 + 3.5	1.70 + 3.30 (1.50 - 5.60)	1650 (200 - 1820)	7.6 - 6.9	2.30 + 4.50 (1.50 - 7.20)	1995 (200 - 2100)	9.2 - 8.4
	1.8 + 5.0	1.40 + 4.00 (1.50 - 5.90)	1795 (200 - 1980)	8.2 - 7.6	2.00 + 5.00 (1.50 - 7.20)	2050 (200 - 2100)	9.4 - 8.6
	2.5 + 2.5	2.50 + 2.50 (1.50 - 5.60)	1650 (200 - 1820)	7.6 - 6.9	3.40 + 3.40 (1.50 - 7.20)	2015 (200 - 2100)	9.3 - 8.5
	2.5 + 3.5	2.17 + 3.03 (1.50 - 5.70)	1730 (200 - 1900)	7.9 - 7.3	3.15 + 3.85 (1.50 - 7.20)	2070 (200 - 2100)	9.5 - 8.7
	3.5 + 3.5	2.70 + 2.70 (1.50 - 5.90)	1795 (200 - 1980)	8.2 - 7.6	3.60 + 3.60 (1.50 - 7.20)	2110 (200 - 2110)	9.7 - 8.9
	2.5 + 5.0	1.80 + 3.60 (1.50 - 5.90)	1795 (200 - 1980)	8.2 - 7.6	2.70 + 4.50 (1.50 - 7.20)	2110 (200 - 2110)	9.7 - 8.9
3.5 + 5.0	2.50 + 3.50 (1.50 - 6.60)	1995 (200 - 2200)	9.2 - 8.4	3.05 + 4.15 (1.50 - 7.20)	2110 (200 - 2110)	9.7 - 8.9	
THREE UNITS	1.8 + 1.8 + 1.8	1.80 + 1.80 + 1.80 (1.50 - 6.00)	1780 (200 - 2200)	8.2 - 7.5	2.40 + 2.40 + 2.40 (1.50 - 7.20)	1900 (200 - 2110)	8.7 - 8.0
	1.8 + 1.8 + 2.5	1.80 + 1.80 + 2.50 (1.50 - 6.40)	2020 (200 - 2200)	9.3 - 8.5	2.00 + 2.00 + 3.20 (1.50 - 7.20)	1900 (200 - 2110)	8.7 - 8.0
	1.8 + 1.8 + 3.5	1.60 + 1.60 + 3.10 (1.50 - 6.60)	2095 (200 - 2200)	9.6 - 8.8	1.85 + 1.85 + 3.50 (1.50 - 7.20)	1900 (200 - 2110)	8.7 - 8.0
	1.8 + 1.8 + 5.0	1.30 + 1.30 + 3.70 (1.50 - 6.60)	2095 (200 - 2200)	9.6 - 8.8	1.60 + 1.60 + 4.00 (1.50 - 7.20)	1900 (200 - 2110)	8.7 - 8.0
	1.8 + 2.5 + 2.5	1.70 + 2.30 + 2.30 (1.50 - 6.60)	2095 (200 - 2200)	9.6 - 8.8	1.80 + 2.70 + 2.70 (1.50 - 7.20)	1900 (200 - 2110)	8.7 - 8.0
	1.8 + 2.5 + 3.5	1.50 + 2.00 + 2.80 (1.50 - 6.60)	2095 (200 - 2200)	9.6 - 8.8	1.60 + 2.50 + 3.10 (1.50 - 7.20)	1900 (200 - 2110)	8.7 - 8.0
	1.8 + 3.5 + 3.5	1.30 + 2.50 + 2.50 (1.50 - 6.60)	2095 (200 - 2200)	9.6 - 8.8	1.40 + 2.90 + 2.90 (1.50 - 7.20)	1900 (200 - 2110)	8.7 - 8.0
	2.5 + 2.5 + 2.5	2.10 + 2.10 + 2.10 (1.50 - 6.60)	2095 (200 - 2200)	9.6 - 8.8	2.40 + 2.40 + 2.40 (1.50 - 7.20)	1900 (200 - 2110)	8.7 - 8.0
	2.5 + 2.5 + 3.5	1.85 + 1.85 + 2.60 (1.50 - 6.60)	2095 (200 - 2200)	9.6 - 8.8	2.23 + 2.23 + 2.74 (1.50 - 7.20)	1900 (200 - 2110)	8.7 - 8.0

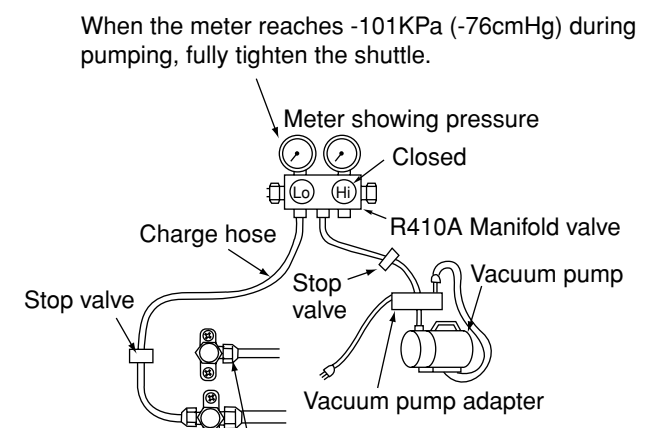
ONE UNIT : The values indicated are only for one unit operation when two or three indoor units are connected.

6. Removal Of Air From The Pipe And Gas Leakage Inspection

6.1 Air purging by using vacuum pump



Air purging by vacuum pump



When pumping starts, slightly loosen the flare nut to check of air sucked in. Then tighten the flare nut.

Be sure the stop valve is always fully opened.

Fig. 6-1

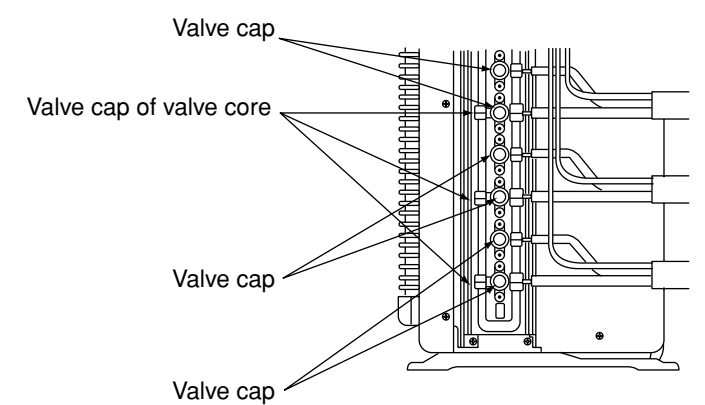


Fig. 6-2

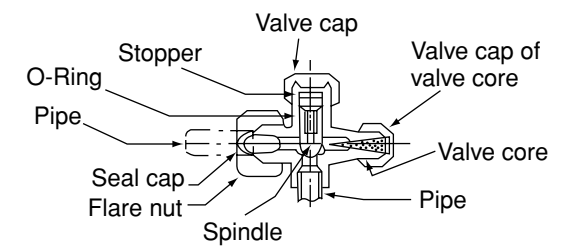


Fig. 6-3

The refrigerant channel is opened so that the refrigerant will flow from the outdoor unit into the indoor unit.

7. Operation test

- Please ensure that the air conditioner is in normal operating condition during the operation test.
- Explain to your customer the proper operation procedures as described in the user's manual.
- If the indoor unit does not operate, check to see that the connections are correct.

CAUTION

- Trial run should be conducted on one unit at a time to check for incorrect wiring of connecting cord.